



Term 1, Weeks 1 & 2,
2019

Blackheath Public School
Leichhardt Street, Blackheath 2785
Office hours: 8.30 a.m.—3.15 p.m.



Website: www.blackheath-p.schools.nsw.edu.au
Email: Blackheath-p.school@det.nsw.edu.au
Phone: 4787 8253 Fax: 4787 8320

FEBRUARY

- 8th Garden Working Bee
- 11th P&C Annual General Meeting
- 14th Swimming Carnival
- 18th House Captains Badged at Assembly
- 19th Parents' Evening
- 20th School Photos
- 21st Yr 6 Sneak Peek at KHS
- 22nd Zone Swinning
- 26th Peer Support

MARCH

- 1st Clean Up Day Disco
- 7th SAKG Cooking Stage 3
- 14th SAKG Cooking Stage 3
- 15th Peer Support
- 19th SAKG Cooking Stage 2
- 21st Harmony Day Grandparents Day
- 22nd Bike To School Day
- Peer Support
- 26th SAKG Cooking Stage 2
- 28th SAKG Cooking Stage 3
- 29th Peer Support

PLEASE REFER TO THE
SCHOOL WEBSITE FOR
RELEVANT NOTES &
FURTHER INFORMATION

FROM THE PRINCIPAL

Dear Parents, Carers & Friends,

Welcome to the 2019 school year at Blackheath Public School. Last Wednesday was abuzz with excitement as friends reunited and classes were announced. Our students settled very quickly and the week has flown.

Thank you parents for ensuring uniforms and supplies are complete and your children are prepared to learn.

This year we have many changes in staff.

We welcome our new teachers, Mr Matt Kelly, Mr James Musgrave, Ms Ellie Nankervis and Ms Vanessa Kirkpatrick.



Welcome to our 53 new Kindergarten students (and their families) who commenced school on Monday. It was a very exciting time for everyone with lots of friends to make and things to learn. I hope this happy start begins a very enjoyable and positive school experience. Thank you to all parents for setting them up so well.

Congratulations to our Sport House Leaders who were elected this week. I am confident you will all do a fine job in your important roles.



Notes will be sent home to explain what is happening in your child's stage and an invitation to our annual Parents' Evening, being held Tuesday 19th. Please come along and meet the teachers, listen to a brief talk and have any questions answered. We look forward to seeing you then.

Please remember that if you have a concern or issue, the first port of call is the class teacher, then the stage Assistant Principal and then me (the principal).

Assistant Principals for 2019 are;
Mrs Ruth Harris for Early Stage 1 and Stage 1
Mr Philip Yeong for Stage 2
Mrs Kristin Harge for Stage 3

Warm Regards,
Jane Davies, Principal

WELCOME KINDER 2019

It was with much excitement that we welcomed our new kinder students. They looked bright and shiny in new uniforms and school shoes. We are looking forward to a fun and exciting year of learning! Mrs Harris



SPORT HOUSE LEADERS

Congratulations to the following students who were elected as leaders of their respective sport houses. We're sure these capable Stage 3 students will do a fantastic job. Their Parents/Carers are invited to our School Assembly on Monday 18th February 2pm where House Badges will be presented.

HOUSE CAPTAINS

KANGAROOS Annabel Dignam & Owen Peterson

KOALAS Ella Stacy & Tenzin Dodds-Bowering

PLATYPUS Natalie Butterworth & Sean Boehringer

WOMBATS Erin Gray & Seamus Reece

HOUSE VICE CAPTAINS

KANGAROOS Kaya Peacock & Blake Henderson

KOALAS Laura Golian & William Touhill

PLATYPUS Hannah Strong & Jasper Brown

WOMBATS Sarah Connell & Logan Hill



RED



GREEN



BLUE



YELLOW



SWIMMING CARNIVAL

Information and permission notes have gone home to all students in Stages 2 & 3 for our annual Swimming Carnival, to be held on Thursday the 14th February. Children in Stage 1 who **turn 8 this year** and are able to **swim 50m** are also invited to attend but must please see Mr Yeong for a permission note. Everyone is looking forward to this exciting day. In the event of cancellation notification will be given via the SKOOLBAG App or please check the schools website.



PRINCIPAL AWARDS

K-1H Leese Holmwood & Kaelan Metcalfe
1-2K Zeke Nicholson & Xanthe Gerontakos
1-2N Ivy Hadjiivanova & Hamish O'Connor
1-2R Henry Pham & Alonso Ho
1-2S Thomas Fisk & Lucas Erskine
3-4B Max Manwaring & Matilda Bhattarai
3-4M Taishan Holland & Tamara Clarke
3-4Y Freya Wilson & William Strong



5-6H James Gough & Chloe Flugge

5-6L Jack Corkins

5-6M Georgia Masters & Logan Hill

5-6T Jasper Brown & Erin Gray



SCHOOL PHOTOS

Blackheath Public School photos will be taken on Wednesday 20th February. Envelopes will be sent home soon to all students and these will need to be returned ON PHOTO DAY. Payments can be made online direct to the photographer, (as per envelope instructions), or the correct money can be included in the envelope.



‘PLAY IS THE WAY’

Our Bounce Back program, designed to build resilience in our students, has been very successful over several years. We are now ready, as part of our focus on Positive Education, to expand our social and emotional learning program through the implementation of ‘Play is the Way’.

‘Play is the Way’ is a practical methodology aiming to empower children by teaching them how to think, reason, analyse and problem-solve in the course of daily living. It directly teaches children positive behaviours such as good manners, perseverance, bravery, honesty, empathy and fairness. Students will be able to demonstrate these skills in a fun way with the ultimate goal that they will be intrinsically motivated to make ethical decisions. We believe this will be a powerful strategy in developing a healthy positive culture in the school.

We will be starting the program with a focus this term on ‘Good Manners’ and we would encourage you to support this at home. Good manners are already flourishing at Blackheath Public School, but this term is a chance to both celebrate and fine tune our good manners – both adults and children.

In term two we will begin the ‘Play is the Way’ activities. Most of the teaching is through game playing, which taps into children’s natural desire to play. Activities will take place during fitness time. A follow-up class session allows the teacher to reinforce the value or concept being taught.

There will be more opportunities for parents to learn about ‘Play is the Way’ during the year.

Louise Bishop

NOTIFYING ILLNESS



Students in our school are currently receiving treatment which results in a lowered immune system, which means, the students are more prone to getting ill from infections. As the students are not contagious but have chronic illnesses, it is important they participate actively in the day to day school program without any major limitations. A major concern is that if these students develop measles, chickenpox, whooping cough or influenza, they could become seriously ill. I seek your cooperation in preventing this situation.



If your child has, or may have, measles, chicken pox or other infectious illness, I would ask that you please:

- 1. Do not send them to school.***
- 2. Notify the School Principal as soon as possible.***
- 3. Take them to your GP or medical centre to confirm diagnosis if possible.***

Thanking you in anticipation, Jane Davies Principal



STAMPS

Do you throw away your used stamps? If so, please tear off the stamp and bring it to Sue in the school office for donation to the Red Cross. Money raised by the foundation is used to support under-privileged families in Australia

A gentle reminder that all payments MUST be in by the due date on the note. Owing to our Department of Education system we cannot process money that comes in after the closing date. You may find that the online payment may seem to work as this is the bank’s system but the money cannot be processed for that event and will be put into credit for your future use. If finance is an issue PLEASE complete the assistance form BEFORE the due date. You are more than welcome to reimburse us after the date.

PAYMENTS



Blackheath P&C Facebook page is the place to go to find out what is happening with all things relating to the P&C. There will be an up-to-the minute vibe on volunteering, fundraisers, entertainment or random information that might just make you smile. Feel free to contact us if you have anything you would like to share, like or comment on. Or you can go mid-twentieth century and pop

suggestions into the P&C box tucked into its own little nook near the front door. You can also catch the news on the Blackheath School website - <http://www.blackheath-p.schools.nsw.edu.au>

Welcome back to all the returning students, new students and our fresh-faced kindy kids (and parents). May the force be with you all for the term ahead.

The canteen is up and running landing with a New Lunar Year special to kick off the first full week. Keep a look out in schoolbags, on skoolbag and the P&C Facebook page for the specials of the week. Order forms are available from the front office. There is also a regular canteen menu available from the canteen or on the Blackheath School website.

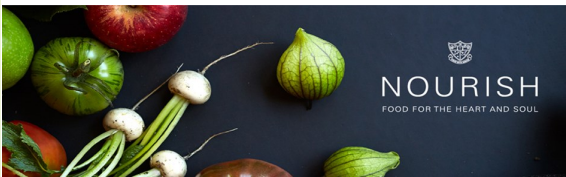


BREAKFAST CLUB DONATIONS

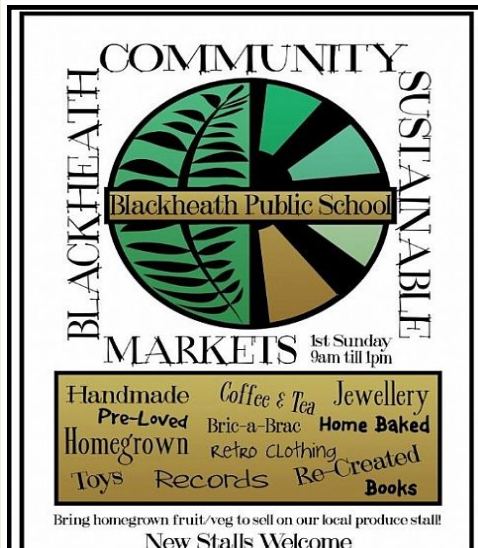
The *Friendly Grocer* is once again helping out with milk supplies but we are looking for donations of nut-free cereal to be served to kids needing breakfast in the morning. This is a really important service run by the P&C to help fill empty tummies so that kids have a little more va-va-voom to get going in the morning.



NOURISH: FOOD FOR THE HEART AND SOUL – THE VERY SPECIAL BPS SCHOOL COOKBOOK



There are just 200 books left that we would love to send out into the world and the money raised will go towards excursion subsidies, classroom supplies, books and other school resources. Just saying – the cookbook makes an awesome gift for any occasion and the seasonal recipes make you look like a superstar in the kitchen.



UNIFORM SHOP

The elegant ladies in uniform, who have a preternatural skill of knowing the Golf Club Trivia questions a week in



advance, are back on Mondays from 8.30am until just after 9am to help with any uniform needs or to answer any questions. Winter uniform order forms are now available, with the closing date Monday the 25th of



February at 9.30am, no late orders accepted. A 50% deposit must be paid at the time of ordering. Please be aware that minimal extra stock is kept so if winter uniform items are required you must place an order. A winter uniform order is included in this Newsletter and/or is available from the school office, the school website and the SKOOLBAG APP.

BPS MARKETS

1st Sunday of each month

Coordinator Murray

042 904 1704

P&C Meeting

NEXT P&C AGM & GENERAL MEETING IS MONDAY, 18th FEBRUARY 2019 AT 7.30PM IN THE SCHOOL LIBRARY

The big meeting is on – all executive positions are up for grabs so put your hand up for President, Vice President (2 positions), Treasurer and Secretary. Make sure you are a signed up member so you can have your say – membership forms are available from the front office.

Five good reasons to consider sending your child to Christian SRE (Scripture)

Broaden their education: No matter what you believe in, you can't escape the fact that the Bible is an extremely influential book. Australian laws and values are based on biblical principles, our language and literature owe much to bible stories, and our culture is historically a Christian one. Knowing about the Bible will enhance your child's cultural understanding.

Answer their questions: Children often have searching questions about life, the universe and everything. We can help to nurture their natural spiritual inquisitiveness by answering their spiritual questions.

Develop their moral compass: If our children are to develop their own ideas about what is ethical, we surely need to give them some moral guidance to start with. The Bible teaches us to love one another, to be kind and compassionate and inclusive, to put others' needs before our own and treat others the way we would like to be treated. That's some backbone for their ethics!

Inform their choices: If you want your child to make their own choices about what they believe in, let them explore their spiritual side, ask questions, and find out the facts so they can make informed decisions.

Let us care for them: Our hope is that the children in our SRE classes will develop a trusting relationship with their teachers so that we can provide encouragement, build self-esteem and be a support in difficult times. We want to share God's love with your children!

You can view the authorised curriculum for our SRE classes on the following websites:

Anglican/combined: www.youthworks.net/sre

Catholic: <http://www.ccdsydney.catholic.edu.au/currRes.html>



GET YOUR DANCING SHOES ON FOR THE

2019 Seniors Week Social Tea Dance

Join us for a free and fun evening of dancing and socialising!

FEBRUARY 16TH | 6PM START |
BLACKHEATH COMMUNITY CENTRE
(PHILLIPS HALL) CNR OF GARDINER
CRESCENT AND GREAT WESTERN
HIGHWAY BLACKHEATH

There will be a dance lesson and a light supper provided. To book, please call Jade on 4787 7770 or projects@banc.org.au





Baby Clinic

in Gardiner Crescent
(CWS Hall) will be
recommencing on the first
Thursday of each month
from February onwards.

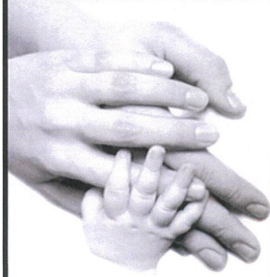


BLUE SHORTS 2019 Blue Shorts is a short film festival held in the Blue Mountains, Australia. Entrants need to reside between Lapstone and Lithgow. Blue Shorts celebrates Blue Mountains stories and storytellers and is a celebration of local creativity and community. Filmmakers of all levels are encouraged to submit short films - from young and emerging filmmakers to the many pros we have in the area. We are looking for short films 7 minutes and under in any genre and style (*films in 12 years and under category need to be 2 mins or less*). **We are ready to take your entries now! The closing date is 22 March 2019.** The festival screenings will be on 4-May 2019 at the beautiful Mount Vic Flicks with an awards presentation after the screenings. Once you have created your project and uploaded your film, please go to <https://filmfreeway.com/BlueShorts> in order to submit your entry to Blue Shorts.

Gateway Family Services

(An activity of Blaxland Uniting Church)

presents...



1-2-3 MAGIC & Emotion Coaching Parenting Group

Are you struggling with your child's behaviour? 123 Magic might be the group you have been looking for. Learn how to:

- **Manage unwanted behaviour** – helping your children to stop doing what you don't want them to do
- **Encourage good behaviour** – helping your children to start doing what you want them to do
- **Emotion coaching** – helping children to identify and manage emotions that drive behaviour
- **Strengthen your relationship** – reinforcing the bond between you and your child- having fun!



Gateway encourages, supports & respects diversity in families & communities. Our Groups are open to everyone.

Come along to our 3 Week Parent Group!

For parents and caregivers with children aged from 2 – 12 years old

LOCATION: Blackheath RSL

Cnr Station Street & Bundarra Road,
Blackheath

WHEN: Monday 18th February –
4th March, 2019

TIME: 9:30am – 11:30am

COST: Donation

Register at Gateway: 1300 316 746

NO CHILDCARE AVAILABLE

Gateway Family Services Parenting Group Programs Term 1, 2019



Program	Date & Time	Location	Registration
Circle of Security <i>Learn how to be a strong, wiser & kinder parent with your kids. Suitable for parents of 0-12 year olds.</i>	Every Wednesday 20th Feb - 3rd April 7:00pm - 9:00pm <i>* NO Childcare</i>	Blaxland Uniting Church (Back Hall) 70-76 Old Bathurst Road, BLAXLAND EAST (Onsite parking available)	Gateway— 1300 316 746 (free call)
Tuning In To Kids <i>Emotionally Intelligent Parenting Learning to better talk & understand your child to help manage your child's emotions & behaviour.</i>	Every Wednesday 6th Mar - 27th Mar 7:00pm - 9:00pm <i>* NO Childcare</i>	Penrith Church of Christ (Rear Hall) 158 Stafford Street, PENRITH	Gateway— 1300 316 746 (free call)
1-2-3 Magic & Emotion Coaching <i>Learn how to understand & manage your child's difficult behaviour. Suitable for parents with 2-12 year olds.</i>	Every Monday 18th Feb - 4th March 9:30am - 11:30am <i>* NO Childcare</i>	Blackheath RSL Cnr Station Street & Bundarra Road, BLACKHEATH	Gateway— 1300 316 746 (free call)
Bringing Up Great Kids <i>Learn about mindfulness & reflection, promoting positive interactions, the meaning behind children's behaviour and ways in which parents can take care of themselves & find support when they need it.</i>	Every Thursday 28th Feb - 4th April 7:00pm - 9:00pm <i>* NO Childcare</i>	Lawson Community Pre-School 16 Honour Avenue, LAWSON	Gateway— 1300 316 746 (free call)

For more information and Individual Flyers go to:

www.gatewayfamilyservices.org.au or www.facebook.com/GatewayFS

Gateway family services parent group program is funded by DSS and NSW FACS.

Gateway works collaboratively with community partners to bring parent groups to communities from St Marys to Blackheath. Thanks to MMM for providing childcare for the Daytime groups.

Gateway encourages, supports & respects diversity in families & communities. Our Groups are open to everyone.



2019 WINTER UNIFORM ORDER FORM

Orders due Monday 25th February by 9.30am. No late orders accepted.

Name _____ Contact Number _____

Child's Name _____

Item	Size 4	Size 6	Size 8	Size 10	Size 12	Size 14	Size 16	Total \$ Amount
Sloppy Joe \$25								
Unisex Polo Shirt (Short Sleeve) \$35	X							
Unisex Polo Shirt <u>Long</u> Sleeve \$40	X							
Girls Bootleg Track Pants \$30								
Boys Double Knee Track Pants \$30								
Girls Winter Skirt \$44								
Boys Long Drill Pants \$22								
Polar Fleece \$45	X							

_____ Total _____

_____ Deposit _____

Total Owing _____

A minimum 50% deposit is required at time of order. A notice will be posted in the Newsletter
when orders are