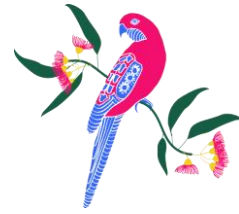


## Blackheath Public School

Leichhardt Street Blackheath NSW 2785

**Phone** (02) 4787 8253 **Fax** (02) 4787 8320  
**Email** [blackheath-p.school@det.nsw.edu.au](mailto:blackheath-p.school@det.nsw.edu.au)  
**Web** <https://blackheathp.schools.nsw.edu.au>



16th May 2024

### Stage 3 - Term 2 Newsletter

Welcome back to Term 2. We hope you had a restful break and found time to have some fun as a family. As we start a new term and head into late Autumn and Winter, we would like to provide you with information about the key events and learning for the term and a reminder of our school uniform expectations.

#### Key Events

<b>Week 1:</b> Tuesday - ANZAC Ceremony Friday - Cross country	<b>Week 6:</b> Wednesday - Stage 3 Narragunnawali Rehearsal
<b>Week 2:</b> Tuesday - Festival of Instrumental Music Recorder Rehearsal Wednesday – Film By Eucalypts Gala Day	<b>Week 7:</b>
<b>Week 3:</b> Wednesday - Games Day	<b>Week 8:</b>
<b>Week 4:</b> Friday – Zone Cross Country	<b>Week 9:</b> Monday - Festival of Instrumental Music Recorder Performance @ the Opera House
<b>Week 5:</b>	<b>Week 10:</b> Vietnamese Immersion Day (date TBA)

#### Learning Focus

In English, our focus texts are 'Bright New World' and 'Dry to Dry: Seasons of Kakadu', which will inform our learning in reading, spelling, grammar, and handwriting. Our writing this term will focus on informative and persuasive texts. In maths, we will be learning numbers, additive relations, multiplicative relations, fractions, patterns and algebra, 2D & 3D spatial structures, position, angles, data, and chance. Students will have the opportunity to learn problem solving skills via the Maths Games and Olympiad competitions. Our science unit will focus on states of matter, ecological footprint, and sustainable design. For HSIE we will explore geographic, demographic, economic and social differences between Vietnam and Australia. For personal development, health and physical education, students will learn about resilience and looking on the bright side in addition to drug education. During circle time, we will explore bullying, racism, and circles of influence. In the creative arts, students will continue to develop their skills in visual arts and the performing arts.

#### HOMEWORK

In Stage 3 we expect students to complete assigned Mathletics tasks and engage in regular reading each night. Reading a wide array of genres and texts is recommended. As there is a large project coming up in Term 3, we have decided to incorporate our usual Term 2 project into the work we complete in class.

---

<b>School Uniform</b>	
School short sleeve polo shirt Dark green skirt Dark green shorts Checked winter skirt Dark green drill shorts	Dark green pants Dark green bucket hat Green/ white socks Black school shoes or boots, or black jogger style shoes
<p><b>Friday Sport:</b> Sport shirt and dark green knit shorts. The Sport shirt can be worn on Fridays ONLY.</p> <p>Students are encouraged to wear beanies, gloves and coats on cold days.</p>	

Hair should be neat, tidy, off the face and if long enough, pulled back to minimise distractions. The wearing of jewellery is discouraged as it can pose a safety risk. Medical alert bracelets, items of religious significance and small studs or sleepers, and a wristwatch are permitted.

Many thanks also to those who have made a voluntary contribution. These contributions allow us to purchase larger resources for our classrooms. In the past we have been able to enhance our classrooms with extra art materials such as clay and specialty paints, extra whiteboard markers, art drying stands, additional pens and textas, classroom games and activities such as kinetic sand.

Please remember:

- Further information about Games Day to come via Compass.
- Check your events folder in Compass for camp information.

Tasrah Marshall

Kerry Oreleon

Hillier Windsor

Matt Kelly

---