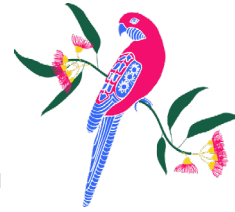




Blackheath Public School

Leichhardt Street Blackheath NSW 2785

Phone (02) 4787 8253 **Fax** (02) 4787 8320
Email blackheath-p.school@det.nsw.edu.au
Web <https://blackheathp.schools.nsw.edu.au>



23rd July 2024

EARLY STAGE ONE/ STAGE ONE TERM 3 NEWSLETTER

Dear Parents and Caregivers,

Welcome back to Term 3. We hope that you have had an enjoyable and restful winter holiday. The Early Stage One and Stage One teachers are ready for another busy term with lots of exciting learning opportunities.

In science this term, Kindergarten will be learning all about toys and exploring the many different ways that they work. Throughout the unit we will also be investigating favourite games and toys that parents and grandparents enjoyed, some may still be favourites today! Children will then be reporting back to the class on their findings. We are looking forward to some interesting news items, so dig out those long-forgotten toys, we would love to share them.

In the coming weeks Stage One will begin a history unit of work titled 'Family & Community – Then & Now'. We will be looking at our family histories as well as the history of our local Blackheath community. The Stage 1 science unit this term is 'Fantastic Forces'. The unit offers lots of opportunities for fun, hands-on exploration of forces.

The Child Protection unit of work will also be delivered to all students from ES1 and Stage 1 this term. This is a mandatory requirement and will explore how students can keep themselves safe.

The Paris Olympics are almost underway and to celebrate this worldwide sporting event we will be holding our very own 'Mini-Olympics' on Thursday, August 1. Students will have an opportunity to participate in a range of fun sports activities as part of their 'team'. Our tabloids will run from 11.30 – 1.00 and parents are welcome to come along and join us.

We are looking forward to welcoming you back into classrooms. Your ongoing support with Home Reading is much appreciated. If you are unable to come in yourself, perhaps a grandparent might be interested in spending time reading with our students. The importance of regular opportunities for children to read aloud cannot be underestimated. Ten minutes a night spent listening to your child read gives an invaluable opportunity to practise reading skills being taught at school and of course the best way to learn to read is to READ, READ, READ!

With the support of a grant from 'Sporting Schools', we are pleased to offer all students from Kindergarten to Year Two a wonderful 'Gymnastics/ Acro' program. These sessions are designed to build fitness, flexibility and body control in a fun half hour session facilitated by staff from 'Dance Dymensions'. These sessions will run each Tuesday from weeks four to seven.

The Stage One Dance group, ably led by Ms Erin Reeves, has been working hard to prepare for their performance in September at the Joan Sutherland Performing Arts Centre in Penrith. Ticket information will be sent home closer to the date.

The Billy Cart Derby is fast approaching, and preparations are well underway. The day is always a highlight in our calendar, filled with fabulous billy cart racing and wild and whacky costumes, it is also a wonderful fund-raising opportunity for BPS. Details of wheeled billy cart specifications have been sent home. Get creative and start planning those box or wheeled billy carts as well as crazy costumes. Medallions and trophies are up for grabs in many categories, including best-dressed and fastest billy carts. Sponsorship cards have been sent home. There are some amazing prizes on offer in the raffle and we would greatly appreciate your support in selling the book of tickets sent home last term. Please return all tickets (whether sold or unsold) to the office.

Many thanks also to those who have already paid their voluntary contribution. These contributions allow us to purchase larger resources for our classrooms. In the past we have been able to enhance our classrooms with the purchase of items such as whiteboards, puzzles, construction toys and Lego. Rest assured that each and every dollar goes directly to funding high quality resources for your children.

The winter months often find our students with lots of illness. We thank you for your support in keeping your child at home if they are displaying cold or flu-like symptoms. We continue to work hard at maintaining a safe learning environment for students and staff. If you have any questions or concerns, please contact your child's classroom teacher, we are always happy to help.

The Early Stage One/ Stage One Team